

IRON JACK PLANE

A jack plane is a general-purpose woodworking bench plane, used for dressing timber down to size in preparation for truing and/or edge jointing.

- Cast Iron Body
- Machined Based
- Heat Treated Carbon Steel Blade
- Available in Wooden Handle & Plastic Handle



JCBL-5001

Sizes in (NO)
3, 4, 5, 6, 7

Sizes in (INCHES)
7, 9, 14, 18, 20

Also Available in



Corrugated Base



BLOCK PLANE

It is used for cleaning up components by removing thin shavings of wood in order to make a component fit within fine tolerances.

- Cast Iron Body
- Machined Based
- Heat Treated Carbon Steel Blade

JCBL-5002

Sizes in (INCHES)
5.1/2, 7

Sizes in (MM)
140, 175



C OR G CLAMP

C-Clamps are versatile tools that serve to temporarily hold work securely in place. They are used for many applications including carpentry, woodworking, furniture making, welding, construction and metal working.

- Malleable Casting Body
- Chrome Plated Screw & Handle

JCBL-5003

Sizes in (INCHES)
1, 2, 3, 4, 6, 8, 12

Sizes in (MM)
25, 50, 75, 100, 150, 200, 300



MINI C OR G CLAMP

- Malleable Casting Body
- Chrome Plated Screw & Handle

JCBL-5004

Set of 3 Pcs
1", 2", 3"



**QUICK RELEASE
C CLAMP**



3 WAY C CLAMP

This clamp is essential for gluing moulding to the edges of projects without the use of nails or clumsy bar clamps.

JCBL-5030

Sizes in (INCHES)
2.1/2

Throat Depth in (INCHES)
2.1/2



C CLAMP DEEP THROAT

JCBL-5029

Sizes in (INCHES)
4, 6



JCBL-5031

Sizes in (INCHES)
1.1/2, 2, 2.1/2, 3

Throat Depth in (INCHES)
1.1/2, 3.1/2, 2.1/2, 4.1/2





HACKSAW FRAME WITH WOODEN HANDLE

A hacksaw is a metal-framed saw used primarily for cutting plastic and metal pipes and other small household materials.

- Strong Frame
- Polished Wooden Handle
- Available with Blade or without Blade



JCBL-5005

Sizes in (INCHES)
12

Sizes in (MM)
300

HACKSAW FRAME WITH PLASTIC HANDLE

- Chrome Plated Body
- Frame Made of Tubular Steel
- Available with Blade or without Blade



JCBL-5006

Sizes in (INCHES)
12

Sizes in (MM)
300

HACKSAW FRAME WITH TUBULAR METAL HANDLE

- Chrome Plated Body
- Available with Blade or without Blade



JCBL-5007

Sizes in (INCHES)
12

Sizes in (MM)
300

ADJUSTABLE HANDY HACKSAW

As the name suggests the blade length is adjustable according to your job requirement.

- Heavy Duty Plastic Handle



JCBL-5008

Sizes in (INCHES)
12

Sizes in (MM)
300



**JUNIOR HACKSAW
WITH STEEL HANDLE**

- Chrome Plated Body

JCBL-5009

Sizes in (INCHES)

6

Sizes in (MM)

150



**JUNIOR HACKSAW WITH
PLASTIC HANDLE**

- Chrome Plated Steel Frame
- Plastic Handle



JCBL-5010

Sizes in (INCHES)

6

Sizes in (MM)

150

HAND DRILL

A hand drill is a manual tool that converts and amplifies circular motion of the crank into circular motion of a drill chuck.

- 3 Jaw Chuck
- Machined Gears
- Available in Wooden Handle & Plastic Handle



JCBL-5011

Sizes in (INCHES)

1/4, 5/16, 3/8

BREAST DRILL

- 3 Jaw Chuck
- Powder Coated Body



JCBL-5012

Sizes in (INCHES)

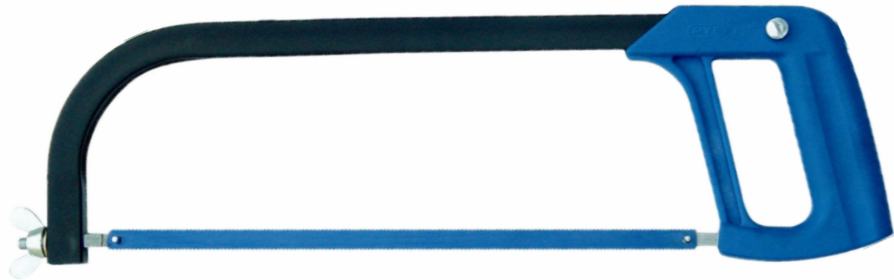
3/8, 1/2

Sizes in (MM)

10, 12



**PROFESSIONAL HACKSAW FRAME
WITH PLASTIC HANDLE**

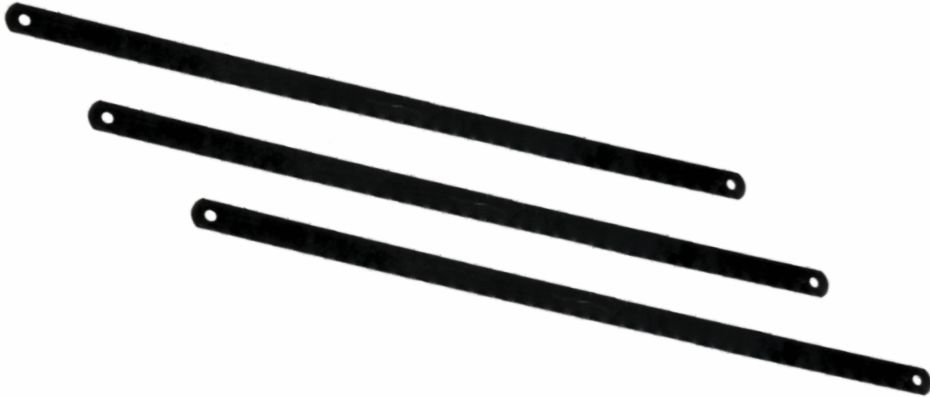


JCBL-5024

Sizes in (INCHES)
12
Sizes in (MM)
300

HACKSAW BLADES

- Made of Carbon Steel, HSS & Bimetal Material



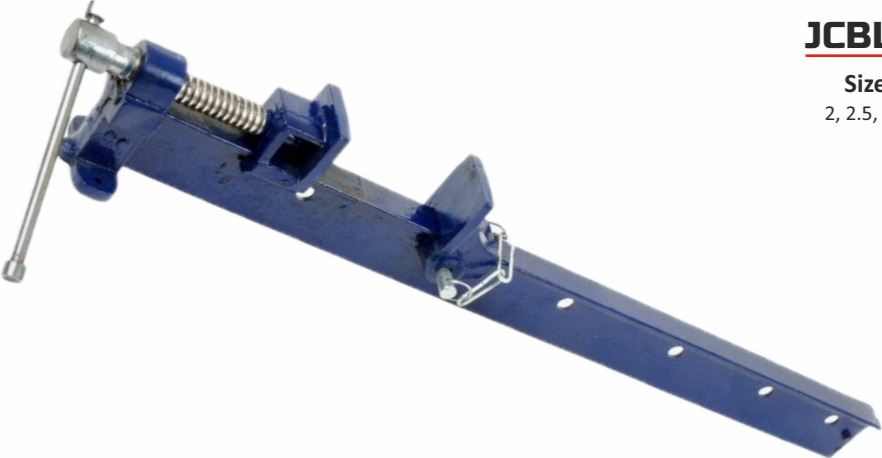
JCBL-5025

Sizes in (INCHES)
6, 12

T-BAR CLAMP

These clamps are designed for the clamping of large section work pieces for joint gluing and general applications.

- Powder Coated Finish
- Clamping Head made of Malleable Casting



JCBL-5014

Sizes in (FEET)
2, 2.5, 3, 4, 5, 6, 7, 8

**THREADING HAND
TAPS**

Thread taps are especially designed tools used to cut the female portion of a mating pair of metal fasteners.

- Available in Set of 3 Pcs
- Made of High Speed Carbon Steel
- BSW, BSF, UNF & UNC (Right & Left threads).



JCBL-5015

Sizes in (INCHES)
1/16, 3/32, 1/8, 5/32, 3/16, 7/32, 1/4, 9/32, 5/16, 3/8, 7/16, 1/2, 9/16, 5/8, 11/16, 3/4, 13/16, 7/8, 15/16, 1, 1.1/8, 1.1/4, 1.3/8, 1.1/2, 1.5/8, 1.3/4, 1.7/8, 2

THREADING HAND TAPS
(METRIC RIGHT & LEFT HAND THREAD)

- Available in Set of 3 Pcs
- Made of High Speed Carbon Steel



THREADING ROUND DIE
(RIGHT & LEFT HAND THREAD)

1/6BSW, 9BA, 10BA, 0 UNF, 1UNF, 2X.4, 2X.45, 0 UNCM, 1 UNC- Outer Dia 13/16"

3/32 BSW, 6BA, 7BA, 8BA, 2.5X.45, 2.6X.45, 3X.5, 3X.6, 3.5X.6, 2 UNF TO10 UNF, 2 UNC TO 10 UNC - Outer Dia 13/16"

1/8, 5/32, 3/16, 7/32, 1/4BSW/BSF/UNF/UNC, 4X.7, 5X.8, 6X1.0, 0 BA TO 5 BA - Outer Dia 13/16"

1/4, 5/16, 3/8, BSW/BSF/UNF/UNC, 6X1.0, 7X1.0, 8X1.25, 9X1.25, 10X1.5, 1/8 BSP - Outer Dia 1"

3/16X40, 7/32X32, 15/64X40, 1/4X36, 9/32X24, 5/16X36, 3/8X32 5.5X.9,6X.75, 8X1.0, 9X1.0, 10X1.0 - Outer Dia 1"

5/16, 3/8, 7/16, 1/2 9/16, 5/8, 11/16, 3/4 BSW/BSF/UNF/UNC 10X1.5, 11X1.5, 12X1.75, 13X1.75, 14X2.0, 16X2.0, 18X2.5, 1/4BSP, 3/8BSP, 1/2, 5/8, 3/4 CONDUIT, 9/16BSCY - Outer Dia 1.1/2"

7/8, 1BSW/BSF/UNF/UNC, 20X2.5, 22X2.5, 24X3.0, 1/2, 5/8, 3/4 BSP 1 CONDUIT - Outer Dia 2"

1.1/8, 1.1/4, BSW/BSF/UNF/UNC, 20X2.5, 22X2.5, 24X3.0, 1/2, 5/8, 3/4BSP, 1, CONDUIT, 27X3.0, 30X3.5 - Outer Dia 2.1/4"

1.1/4BSW/BSF/UNF/UNC 1.370 BSCY, 27X3.0, 30X3.5 - Outer/Dia 2.1/2"

1.3/8, 1.1/2BSW/BSF/UNF/UNC, 33X3.5, 36X4.0, 1 BSP, 1.1/4 BSP - Outer Dia 3"

1.3/4, 2 BSW/BSF, 40X4.0, 42X4.5, 45X4.5, 48X5.0, 50X5.0, 1.1/2 BSP - Outer Dia 4"



JCBL-5016

Sizes in (MM)
2, 3, 4, 5, 6, 7, 8, 9, 10, 11, 12, 14,
16, 18, 20, 22, 24, 25, 27, 30, 33,
36, 39, 40, 42, 45, 48, 50

JCBL-5017

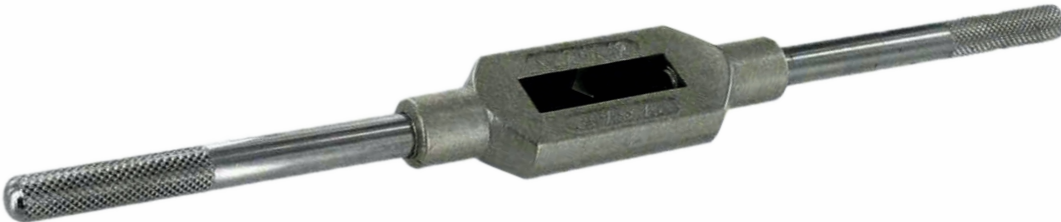
TAP HANDLE,
SQUARE DIE HANDLE

Tap wrenches are useful in confined spaces or where extra reach is required. T wrenches hold the end of a tap to provide extra leverage for hand tapping.

Finishes Available:

POWDER
COATED

POLISHED



ROUND DIE HANDLE

It is used to make external threads on the job, It also hold the Round dies with screw mechanism.

Finishes Available:

POWDER
COATED

POLISHED



JCBL-5018

Sizes in (INCHES)
1/4, 3/8, 1/2, 3/4, 1, 1.1/4, 1.1/2, 2, 2.1/2

JCBL-5019

Sizes in (INCHES)
13/16, 1, 1.5/16, 1.1/2, 2, 2.1/4, 2.1/2, 3, 4



TUBE CUTTER

Wheeled pipe cutters are used to cut pipes made from copper, brass, plastic and thin-walled electrical metal tubing (EMT). Unlike a saw, this tool makes a clean uniformed cut using a sharp metal wheel.

- One Cutting Wheel & Two Rollers for cutting thin wall pipes



MINI TUBE CUTTER

After tightening the feed screw, mini tubing cutters work faster by providing a more consistent cutting force on the wheel. Mini tubing cutters can be used on copper, steel, stainless steel and aluminium tubing in confined spaces.

- One Cutting Wheel & One Rollers for cutting thin wall pipes



JCBL-5021

Sizes in (INCHES)
1/8-1.1/8

Sizes in (MM)
3-30

PIPE CUTTER

A pipe cutter is a type of tool used by plumbers to cut pipe. Besides producing a clean cut, the tool is often a faster, cleaner, and more convenient way of cutting pipe than using a hacksaw.

- SG Casting Body



JCBL-5023

Sizes in (MM)	Sizes in (INCHES)
9-25	3/8-1
12-50	1/2-2
12-75	1/2-3
25-100	1-4
50-150	2-6

BAR BENDER DOUBLE END

Is used to bend bars made of steel and other heavy metals. Rebar benders are widely used in building and construction. These bar benders enable you to bend heavy steel bars at accurate angles.

- Drop Forged Steel
- For Straightening/Bending the Re-Inforced Steel



JCBL-5026

Sizes in (MM)
6x8, 8x10, 10x12, 12x14, 14x16

Finishes Available:

CHROME
PLATED

POWDER
COATED

JCBL-5022

Sizes in (MM)	Sizes in (INCHES)
3-16	1/8-5/8
3-22	1/8-7/8



MASON CHISEL

Chisel meaning is a hand tool used for carving, cutting, shaping hard materials such as wood, stone, metal.

- Made of high quality Carbon Steel
- Available with grip or without grip
- Available in Flat End & Pointed End
- Available in polished head & full painted
- Available in full hard/tip hard



JCBL-6001

Length in (INCHES)
6, 8, 10, 12, 14, 16, 18

DIA in (MM)
12, 14, 16, 18, 25

Finishes Available:

POWDER
COATED

BRICK BOLSTER CHISEL

Brick bolster chisel is used to make smooth cuts on bricks.

- Available with grip or without grip
- Made of high quality Carbon Steel
- Also Available in polished head



JCBL-6002

Sizes in (INCHES)
2.1/4, 4

Finishes Available:

POWDER
COATED

WRECKING BAR

A Wrecking Bar is a heavy metal device with one end flattened, split to create a 'V' for pulling nails from objects and curved so can be used in a lever action for prying and demolishing. The other end is machined into a chisel shape to be used for prying items apart again with the action of levering.

- Made of high quality Carbon Steel
- Available in Polished Edges and Full Painted
- Available in Full Hard / Tip Hard

Length (MM)	Length (INCH)	DIA (MM)
300	12	12
400	16	16
450	18	18
600	24	22
750	30	25
900	36	



JCBL-6003

Length in (INCHES)
1/8-1.1/8

Dia in (MM)
3-30

Finishes Available:

POWDER
COATED

A-Double Bend
B-Single Bend



JCBL India

PRY BAR

- Made of high quality Carbon Steel
- Available in Polished Edges and Full Painted

Finishes Available:

**POWDER
COATED**

JCBL-6004

Sizes

25mmX4mmX7"
30mmX5mmX12"
30mmX5mmX15"
35mmX6mmX15"

WRECKING BAR (GORILLA MODEL)

- Made of high quality Carbon Steel
- Available in Polished Edges and Full Painted

Finishes Available:

**POWDER
COATED**



NAIL PULLER WITH GRIP

A nail puller is a handy, time-saving device used to extract nails that are bent, driven in the wrong spot, or need to be pulled out of a piece of wood for other reasons.

- Made of high quality Carbon Steel
- Available in Polished Edges and Full Painted



JCBL-6006

Sizes in (INCHES)

12

Sizes in (MM)

300

Finishes Available:

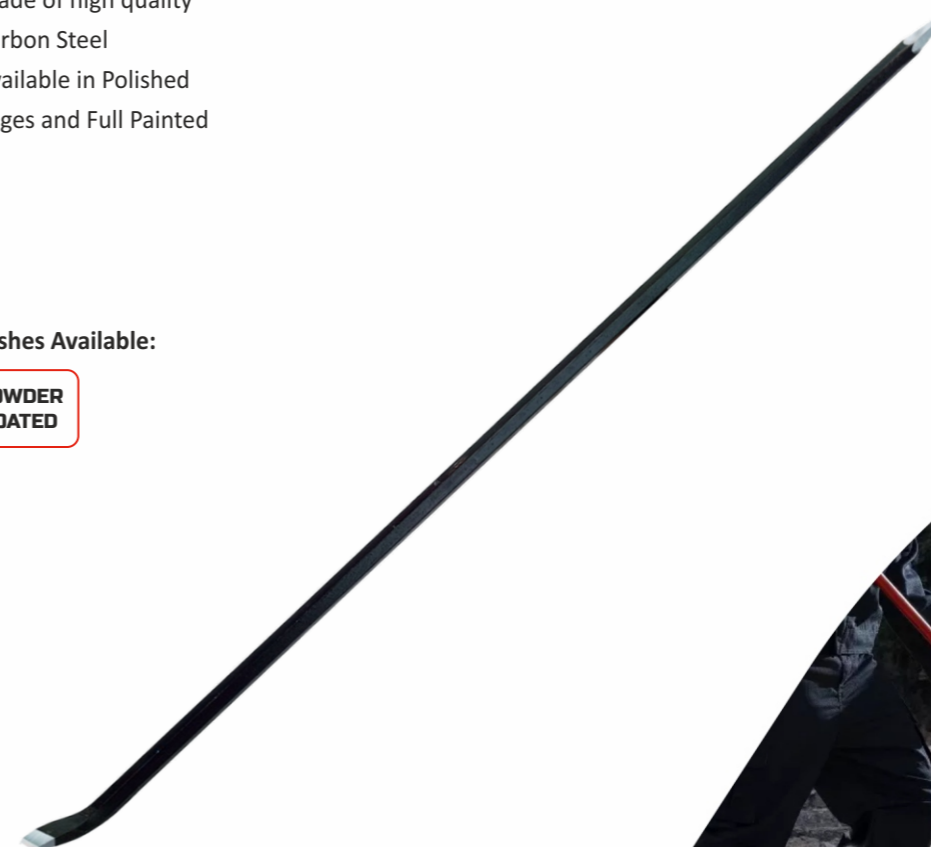
**POWDER
COATED**

CROW BAR

- Made of high quality Carbon Steel
- Available in Polished Edges and Full Painted

Finishes Available:

**POWDER
COATED**



JCBL-6007

Length in (INCHES)

60, 70

DIA in (MM)

25, 28, 32

MASON PEG WITH SHEETED LEVER

- Made of high quality Carbon Steel
- Available in Round, Octagonal, Square

Finishes Available:

POWDER
COATED



JCBL-6008

Sizes in (INCHES)
10, 12

DIA in (MM)
10, 12

DRIVE PIN PINCH

Drive pin punch are used for driving pins into or out of a workpiece. Drive Pin Punch is well proportioned, hardened, properly tempered, nicely finished, and have a knurled finger grip.

- Made of high quality Carbon Steel
- Hardened & Tempered
- Knurled Body for secure grip



JCBL-6010

Sizes in (INCH)	Set of Pcs
4	8
6	5
8	8

Finishes Available:

BLACK

CHROME
PLATED

CENTRE PUNCH & NAIL PUNCH

A center punch is used to mark the center of a point. It is usually used to mark the center of a hole when drilling holes.

- Made of high quality Carbon Steel
- Hardened & Tempered
- Available in Square & Round Head

JCBL-6011

Sizes in (INCHES)
3/32, 1/8, 5/32

Length in (INCHES)
4



PUNCH & CHISEL SET

- Made of high quality Carbon Steel
- Hardened & Tempered



JCBL-6012

Set of 12 Pcs.

Chisel (Flat)	12mmx6"	2 Pcs.
Chisel (Flat)	16mmx8"	2 Pcs.
Chisel (Flat)	18mmx10"	2 Pcs.
Nail Punch	12mmx10"	1 Pc.
Nail Punch	16mmx10"	1 Pc.
Nail Punch	12mmx6"	1 Pc.
Centre Punch	12mmx6"	1 Pc.
Centre Punch	16mmx8"	1 Pc.
Pin Punch	16mmx8"	1 Pc.

JCBL India